



### Markets Served

- » Biotech/Healthcare
- » Commercial
- » Education
- » Manufacturing/Industrial
- » Public/Government
- » Technology
- » Telecommunications
- » Data Centers
- » Retail
- » Sports/Entertainment
- » Transportation
- » Food Processing
- » Waste and Water Treatment



## An Innovative Systems Integration Company Focused on Exceptional Performance

Precision Controls of Indianapolis, a division of Shambaugh & Son L.P., provides a full suite of professional mechanical, automation, and controls solutions. Shambaugh, a division of EMCOR Group, Inc., is one of the largest design-build construction firms in the nation.

Our skilled engineers custom design and implement industrial process controls, integration, and data acquisition systems for a variety of markets. We also repair, replace, and provide preventive maintenance for all types of heating, ventilating, and air conditioning equipment.

### Building Automation Controls

We deliver facility automation design, installation, and support for almost every building system, and our web-based technologies give owners global access to all their building performance information.

Using the latest in advanced, state-of-the-art diagnostic and automated control technologies, our goal is to minimize the cost of operating building environments without sacrificing occupant comfort. And because we represent multiple system manufacturers, we can help clients find the right solution to meet their operating goals.

Our controls and automation services include:

- » Complete system design and integration
- » Installation
- » Programming
- » Networking
- » Commissioning
- » Graphics
- » Maintenance



### Instrument Calibration

Our process controls experts are committed to providing excellent instrument calibration services for electrical, mechanical, and process controls.

Backed by a team of International Society of Automation (ISA) Certified Control Systems Technicians (CCST), we strive to deliver the highest levels of quality and precision. Further, we also provide National Institute of Standards (NIST) traceable calibrations to help verify the accuracy of digital services, such as infrared sensors.

## Process Controls Systems Design and Integration

We provide process control systems design and integration, as well as supervisory control and data acquisition systems solutions engineered to your precise needs. Centered around the latest programmable logic controllers (PLCs) and graphical user interface (GUI) software, our team designs and implements systems for a variety of uses and industries.

Our goal is always to provide our customers with an efficient, integrated solution designed to meet their operational needs for years to come. Our thorough design process incorporates the following:

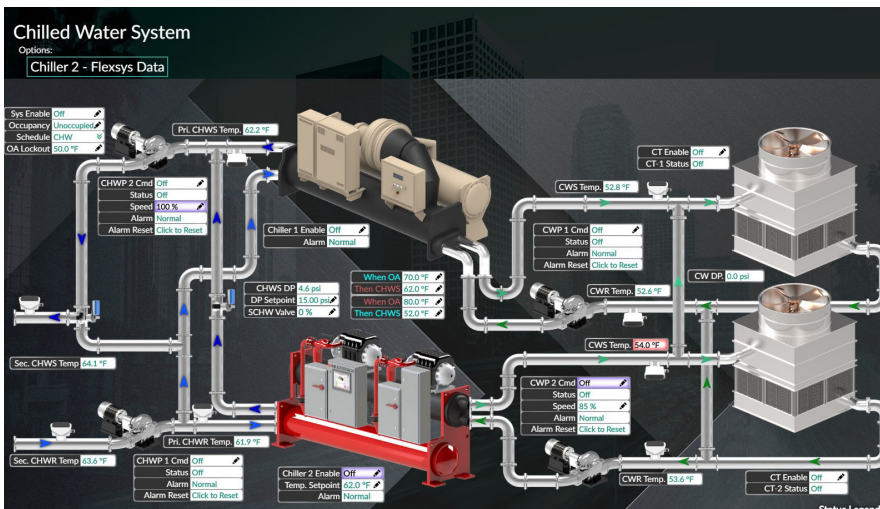
- » Process assessment
- » Sensor and output control device selection
- » Leading PLC and GUI technologies
- » Network design encompassing all controllers, third-party microprocessors, and customer IP connections
- » AutoCAD system drawing creation
- » UL labeled panel construction
- » Installation performed in-house or in conjunction with client's chosen contractor

## HVAC Installation and Maintenance

We also offer a complete array of HVAC installation, maintenance, service, and support programs to help provide peace of mind to busy customers. Our technicians and service personnel are qualified to support facilities of all types, from small, air-cooled systems to central energy plants with thousands of tons of cooling capacity.

Our mechanical solutions encompass:

- » Equipment installation
- » Spot service and repair
- » Preventive maintenance programs
- » Full-coverage maintenance and repair
- » Equipment replacement services, including director replacement or design-build retrofits
- » Back flow prevention inspections
- » 24-hour emergency service



## Advantages

- » Decades of industry experience
- » LEED-accredited professionals
- » Certified Energy Managers on staff
- » 24/7/365 emergency response
- » Custom control panel wiring and fabrication shop
- » Single point of responsibility for total building solutions
- » Familiarity with leading manufacturers and software